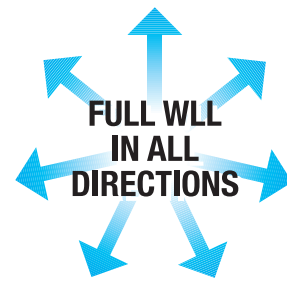


# INOX-ABA

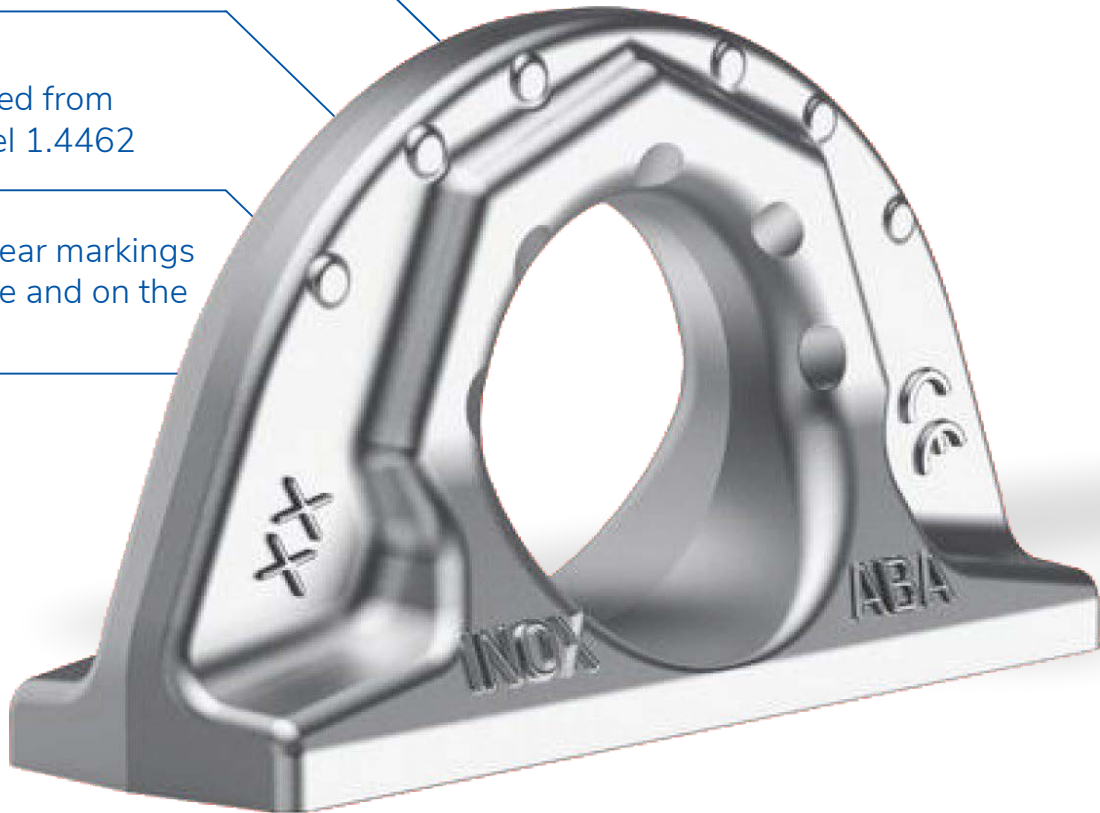
Stainless Steel Lifting Point for Welding



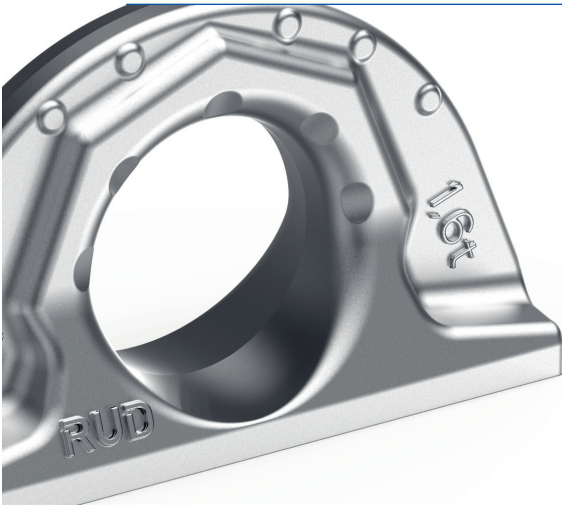
Full WLL in any direction  
with 4:1 design factor

Manufactured from  
Duplex Steel 1.4462

Patented wear markings  
on the inside and on the  
outside



## Product features / INOX-ABA Lifting Point



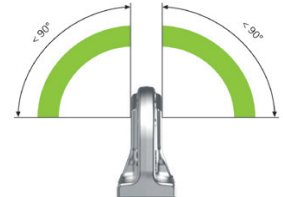
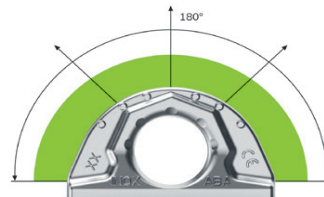
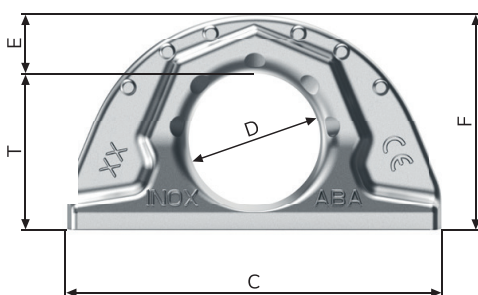
### Forged from a single piece of Duplex Steel 1.4462

Duplex Steel is known for corrosion resistant properties against crevice corrosion and chloride pitting. It is also resistant to seawater, water vapour, nitric acid and sulphuric acid. It is also cost-effective due to its lower nickel content.

- ✓ Full WLL in any direction with 4:1 design factor
- ✓ Manufactured in Germany from Duplex Steel 1.4462
- ✓ Clear marking of the WLL
- ✓ Patented wear markings on the inside and outside
- ✓ Closed and circumferential fillet weld
- ✓ Temperature Range -40°C to 250°C no reduction in WLL

TYPE	WLL[t]	A	B	C	D	E	F	T	WEIGHT [kg]	Reference Number
INOX-ABA 0.8 t	0.8	22	12	70	32	12	50	38	0.2	7912396
INOX-ABA 1.6 t	1.6	30	16	100	35	16	57	41.5	0.45	7912397
INOX-ABA 2.7 t	2.7	41	23	137	50	21	80	59	1.1	7912398

Dimensions and specifications subject to change



Food industry



Petrochemicals



Shipbuilding

#### Head Office

12 Commerce Place, Larapinta QLD 4110  
T: +61 7 3809 1300 F: +61 7 3809 1301

#### WA Office: Perth

107 Broadway, Bassendean WA 6054  
T: +61 8 6278 1788 F: +61 8 6278 4788

E: sales@rud.com.au

W: www.rud.com.au

ABN: 74 010 547 949



Full Member

Quality ISO 9001

Environment ISO 9001

Occupational Health and Safety ISO 45001

SAI GLOBAL

SAI GLOBAL

SAI GLOBAL

SAI GLOBAL